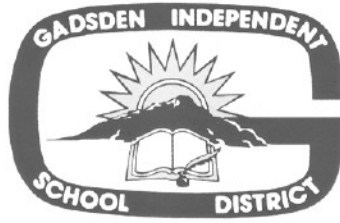


**CONSTRUCTION OFFICE**  
David F. Boyd  
Construction Coordinator



1325 W. Washington St.  
P.O. Drawer 70  
Anthony, NM 88021  
Phone (505) 882-6720  
Fax (505) 882-6740

TO: Ron Haugen, Superintendent  
FROM: David F. Boyd, Construction Coordinator  
DATE: March 3, 2004  
SUBJECT: Construction Department Report Update

Two New Schools Under Construction:

*Santa Teresa Elementary School* is 100% complete.  
Project contract closeout underway. Approximately 95% complete.

*Sunrise Elementary School* is 100% complete.  
Project contract closeout underway. Approximately 95% complete.

*Sunrise Elementary School* Geothermal Bore Field Pre-Construction approximately 100% complete. Project contract closeout underway. Approximately 95% complete.

*Mesquite Elementary School Classroom Addition – 2003* is 100% complete.  
Project contract closeout underway. Approximately 95% complete.

*Santa Teresa High School Library/Classroom Addition* - is approximately 48% complete.  
Completion dates as follows:

- Library/Classroom / Approximately July 6, 2004
- Annex Remodeling / Approximately July 26, 2004
- Interior Remodeling & Demolition of Barracks / Approximately November 1, 2004

*Technology Server Rooms A/C* – is approximately 95% complete.

*ADA at Five Schools* – is approximately 98% complete.

*Santa Teresa Middle School Miscellaneous Deficiencies* – is 100% complete. Project contract closeout underway. Approximately 95% complete.

Projects in Design:

*Pre-school Addition to Gadsden Administration Complex* - Additional Funding Approved - Design documents are 90% complete. See attached drawing.

*Santa Teresa High School Addition Phase II* – On going meetings with design committee. See attached drawing.

*New Northern Elementary School* – Land purchase underway. See attached drawing.

Projects in Design (Cont.):

*New Chaparral High School* – District received \$22,000,000.00. Land transfer underway.

*2004 ADA Project* – Bid documents are 90% complete.

Miscellaneous Projects:

*Landscaping Chaparral and Santa Teresa Area Schools* – Constructor is scheduled to start work on March 8, 2004.

*Sunland Park Elementary School Soccer Field* - out to bid.

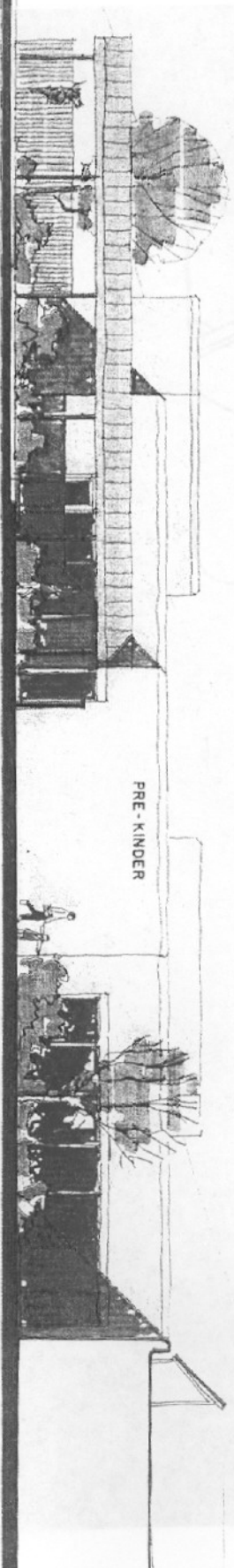
*2003/2004 Reroofing Projects* – requesting Board approval for low bidder.

*Gadsden Middle School Mechanical Upgrade 2003* – requesting Board approval for low bidder.

*Desert View, Riverside and Sunland Park Elementary Schools Structural Repairs* – design documents are approximately 98% complete.

Project Photos

*See attached photos.*



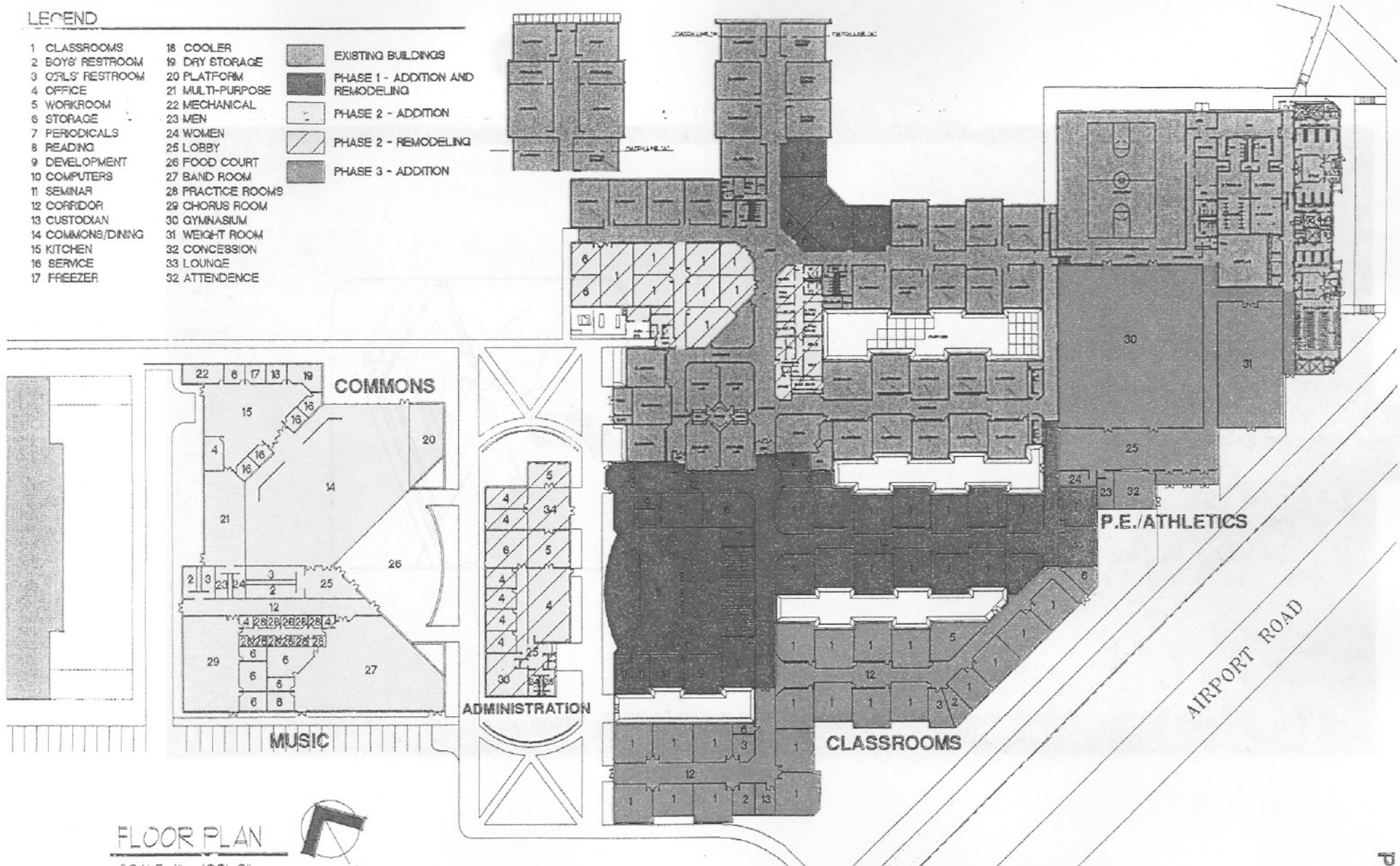
WEST ELEVATION  
1/8" = 1'-0"

PRE - KINDER

**PRE-SCHOOL ADDITION TO GADSDEN ADMINISTRATION COMPLEX**

**LEGEND**

- |                   |                   |                                   |
|-------------------|-------------------|-----------------------------------|
| 1 CLASSROOMS      | 18 COOLER         | EXISTING BUILDINGS                |
| 2 BOYS' RESTROOM  | 19 DRY STORAGE    | PHASE 1 - ADDITION AND REMODELING |
| 3 GIRLS' RESTROOM | 20 PLATFORM       | PHASE 2 - ADDITION                |
| 4 OFFICE          | 21 MULTI-PURPOSE  | PHASE 2 - REMODELING              |
| 5 WORKROOM        | 22 MECHANICAL     | PHASE 3 - ADDITION                |
| 6 STORAGE         | 23 MEN            |                                   |
| 7 PERIODICALS     | 24 WOMEN          |                                   |
| 8 READING         | 25 LOBBY          |                                   |
| 9 DEVELOPMENT     | 26 FOOD COURT     |                                   |
| 10 COMPUTERS      | 27 BAND ROOM      |                                   |
| 11 SEMINAR        | 28 PRACTICE ROOMS |                                   |
| 12 CORRIDOR       | 29 CHORUS ROOM    |                                   |
| 13 CUSTODIAN      | 30 GYMNASIUM      |                                   |
| 14 COMMONS/DINING | 31 WEIGHT ROOM    |                                   |
| 15 KITCHEN        | 32 CONCESSION     |                                   |
| 16 SERVICE        | 33 LOUNGE         |                                   |
| 17 FREEZER        | 34 ATTENDANCE     |                                   |



**FLOOR PLAN**

SCALE: 1" = 100'-0"



**ADDITIONS AND REMODELING TO SANTA TERESA HIGH SCHOOL**

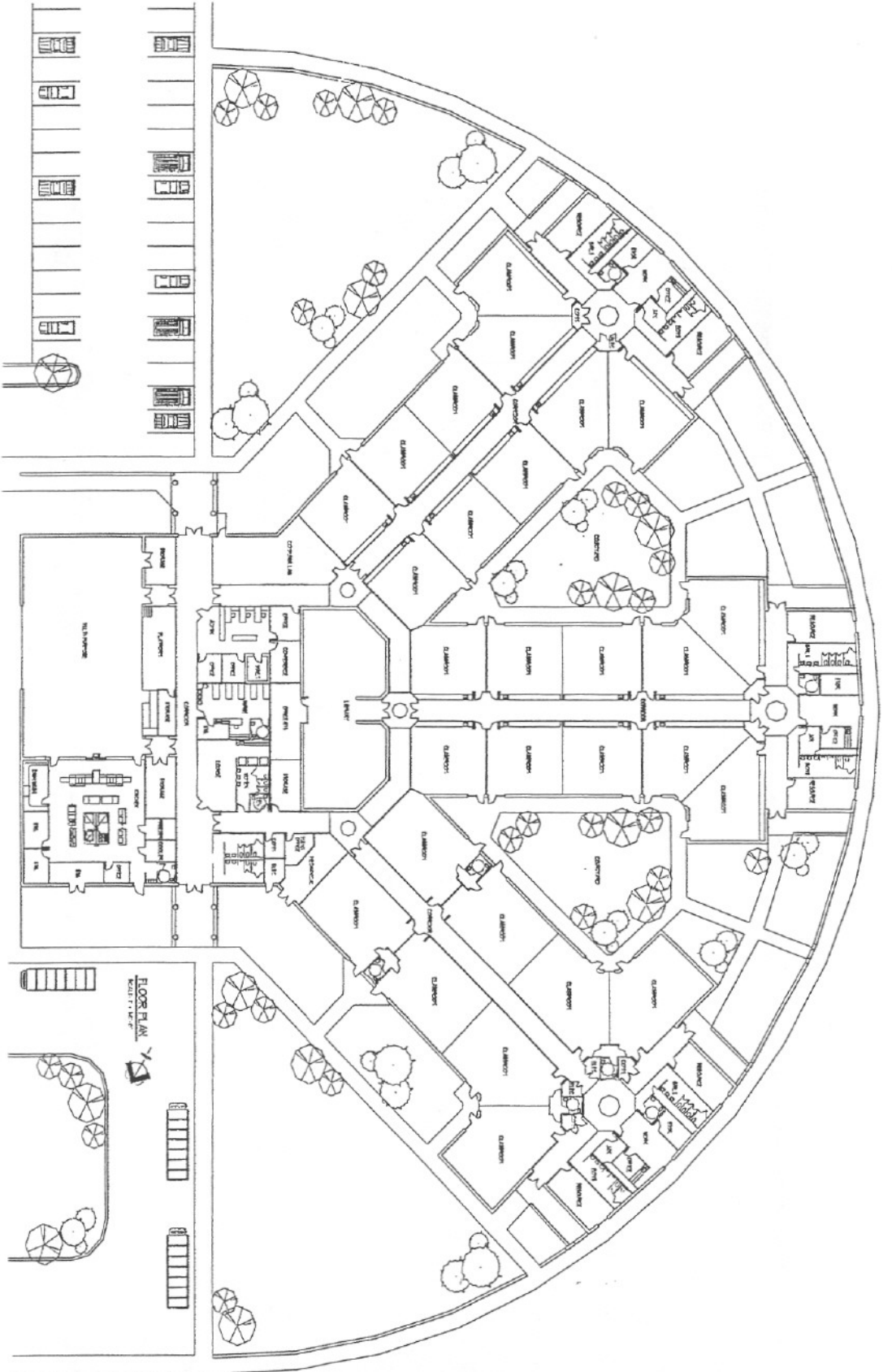
CADSDEN INDEPENDENT SCHOOL DISTRICT NO. 19

11-22-02



ALLEY ASSOCIATES

PRIORITY 2



# NEW NORTHERN ELEMENTARY SCHOOL

GADSDEN INDEPENDENT SCHOOL DISTRICT

FLOOR PLAN

